

www.ark.ac.uk



ARK

Northern Ireland

ACCESS RESEARCH KNOWLEDGE



Welcome

Professor Hugh McKenna
Pro Vice Chancellor Research and Innovation
University of Ulster

2012 Northern Ireland Life and Times Survey

www.ark.ac.uk/nilt

#nilt2012



- Northern Ireland Life and Times (NILT) Survey
 - Annual survey, began in 1998 – gap in 2011
 - Monitor the attitudes and behaviour of people in Northern Ireland
 - Time-series and public record of attitudes and behaviour
 - Descendent of Northern Ireland Social Attitudes Survey 1989-1996
 - Modular format

- Attitudes of a random sample of 1204 adults aged 18 years or over to:
 - Autism
 - Minority Ethnic People
 - Migrant workers
 - Asylum seekers
 - Community Relations
 - Lesbian, Gay, Bisexual and Transgender issues
 - Political Attitudes

- Available from this week:
 - Questionnaires
 - Technical reports
 - Tables of results – by age, gender, religion
 - Data to download
 - Technical helpline
- Time series available on SOL
- www.ark.ac.uk/sol

Coming soon! New teaching resources

2003-12 *Young Life and Time* surveys

2012 *Northern Ireland Life and Times* survey

Resources include: new teaching datasets, accessible technical reports and teaching guidelines for instructors.

If you are interested in utilising these new resources in your teaching, please check out the ARK website, or contact the team:

Emma Calvert (e.calvert@qub.ac.uk), School of Sociology, Social Policy & Social Work, QUB

Paula Devine (p.devine@qub.ac.uk), Deputy Director, ARK

Where to now? Public attitudes to the long term future of Northern Ireland

Dr Duncan Morrow, University of Ulster

Professor Rick Wilford, Queen's University Belfast

6 June 2013

Fig 1: National Identity

www.ark.ac.uk

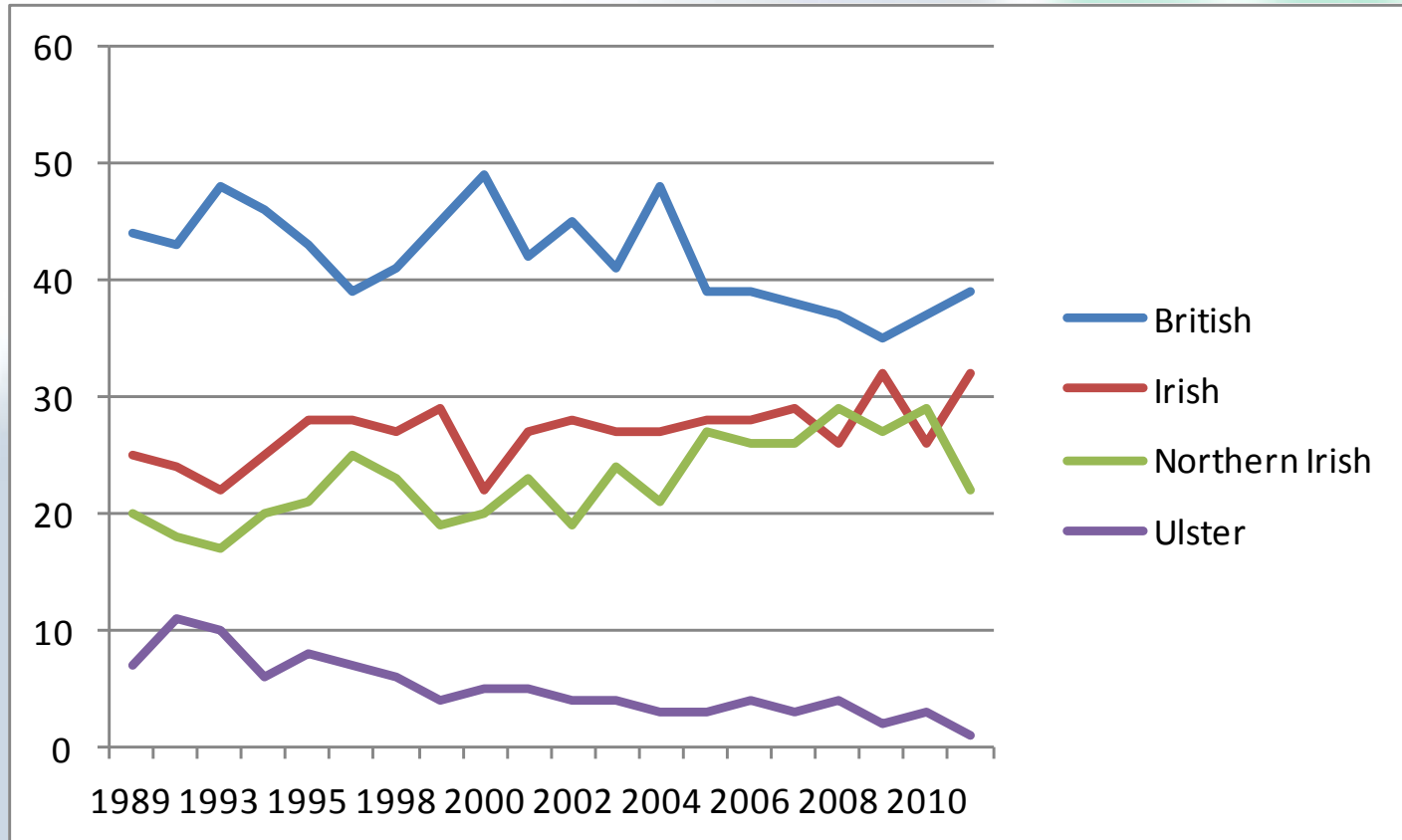


Fig 2: % describing themselves as British by religion

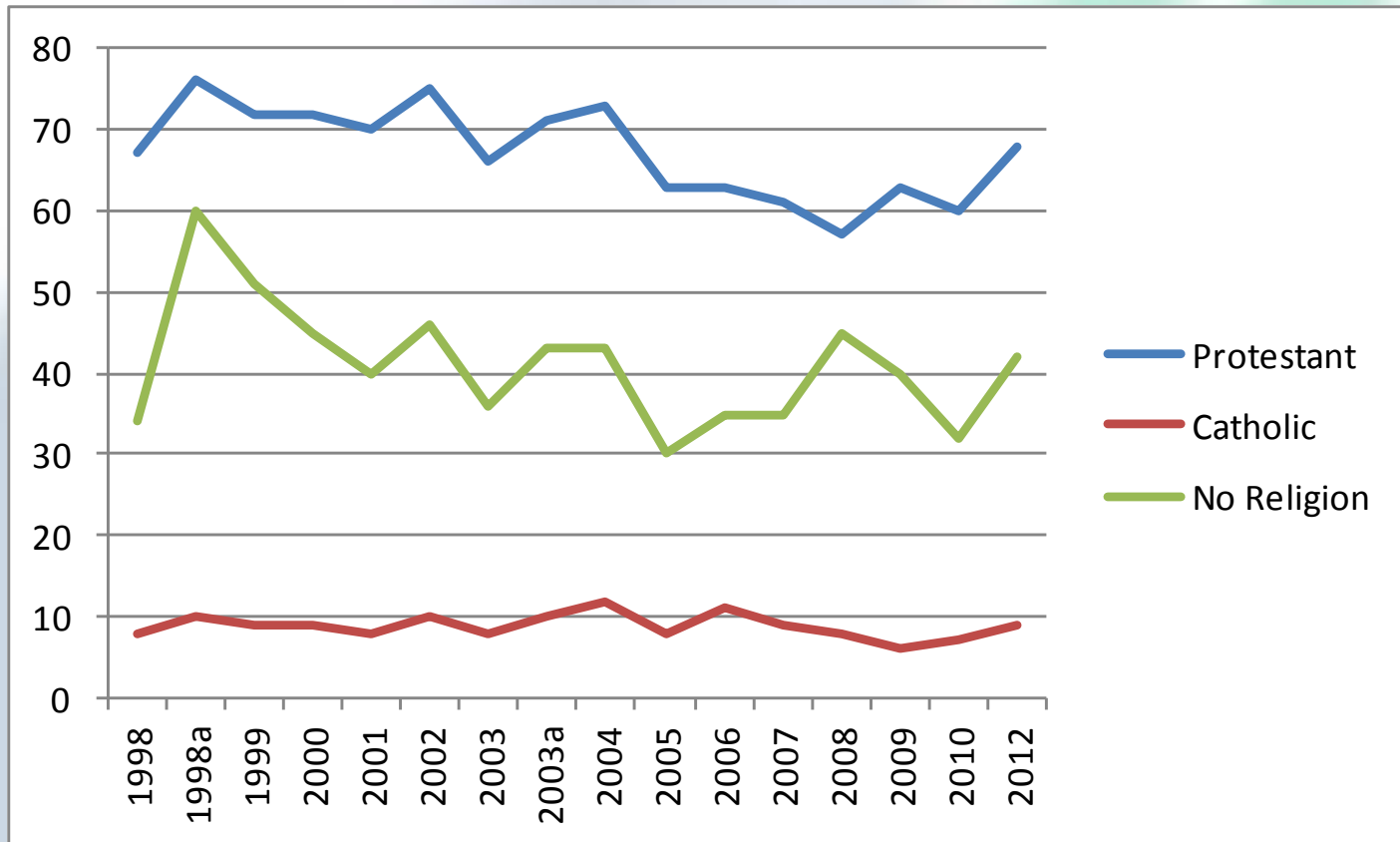


Fig 3: % describing themselves as Irish by religion

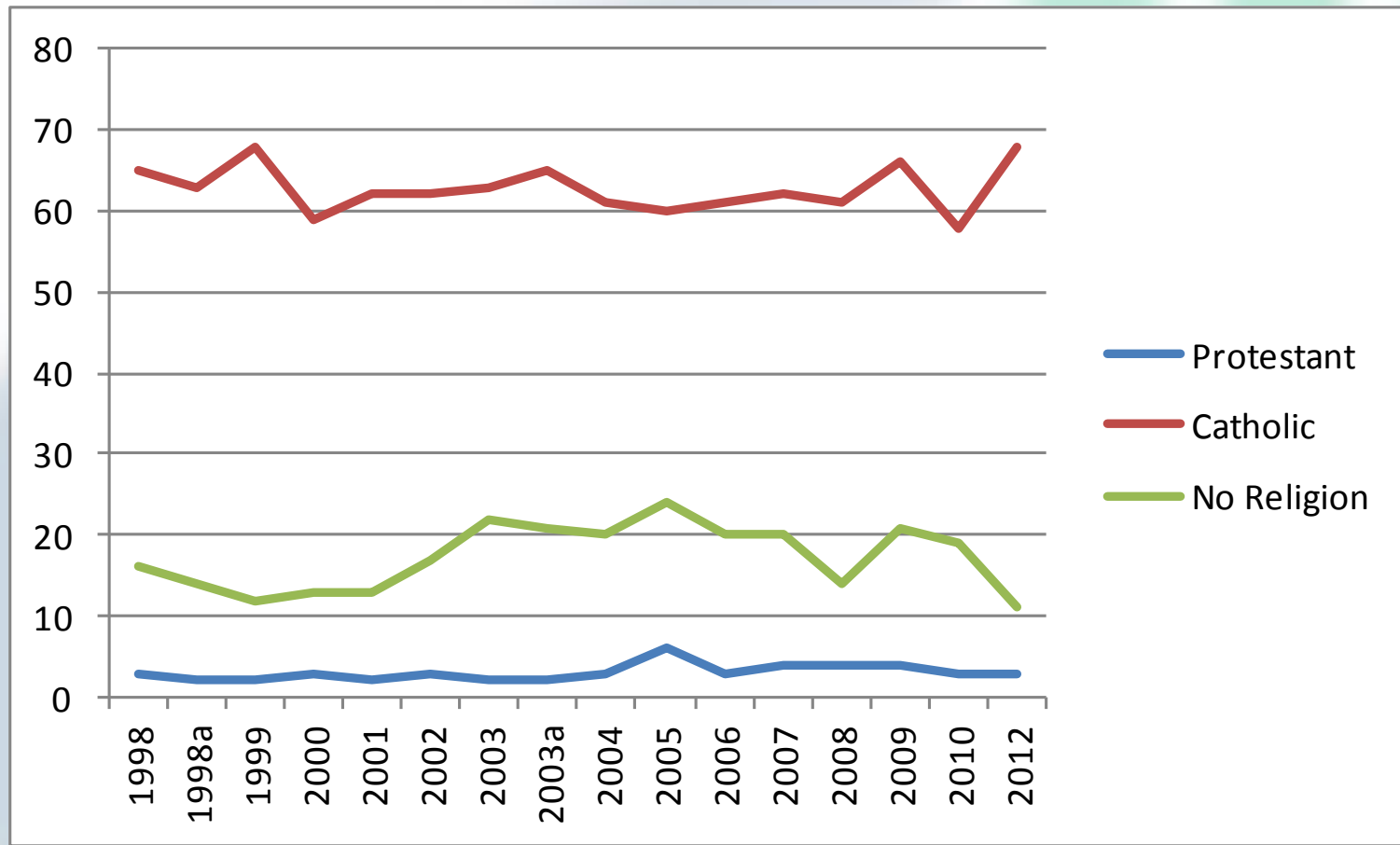


Fig 4: % describing themselves as Northern Irish by religion

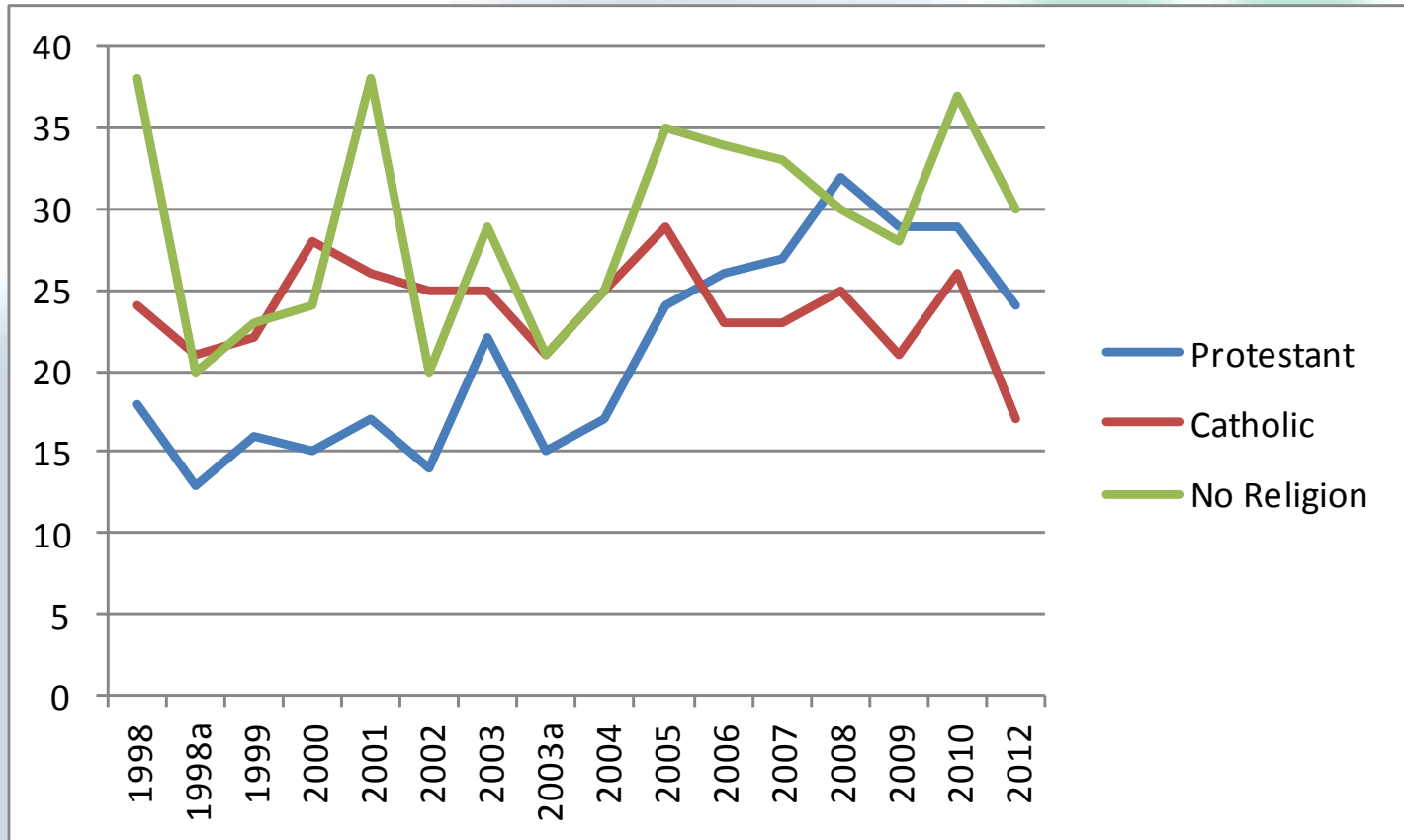


Fig 5: Moreno question asked in 2007 and 2012

- Some people think of themselves first as British. Others may think of themselves first as Irish. Which, if any, of the following best describes how you see yourself?

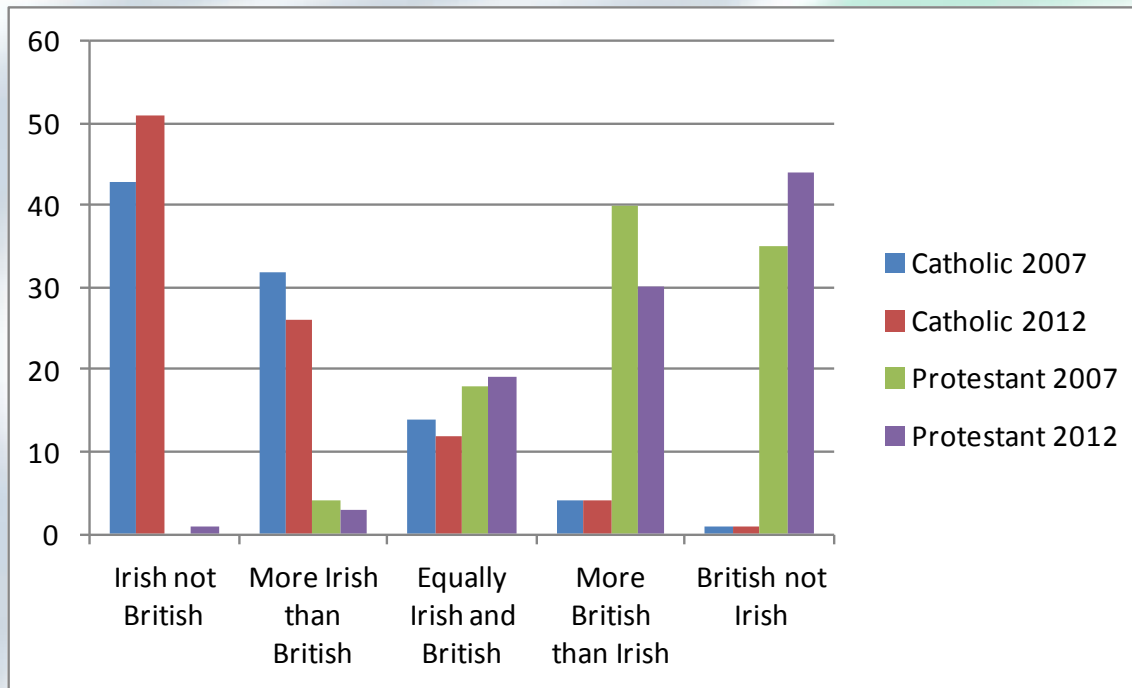


Fig 6 % think of themselves as unionist by religion

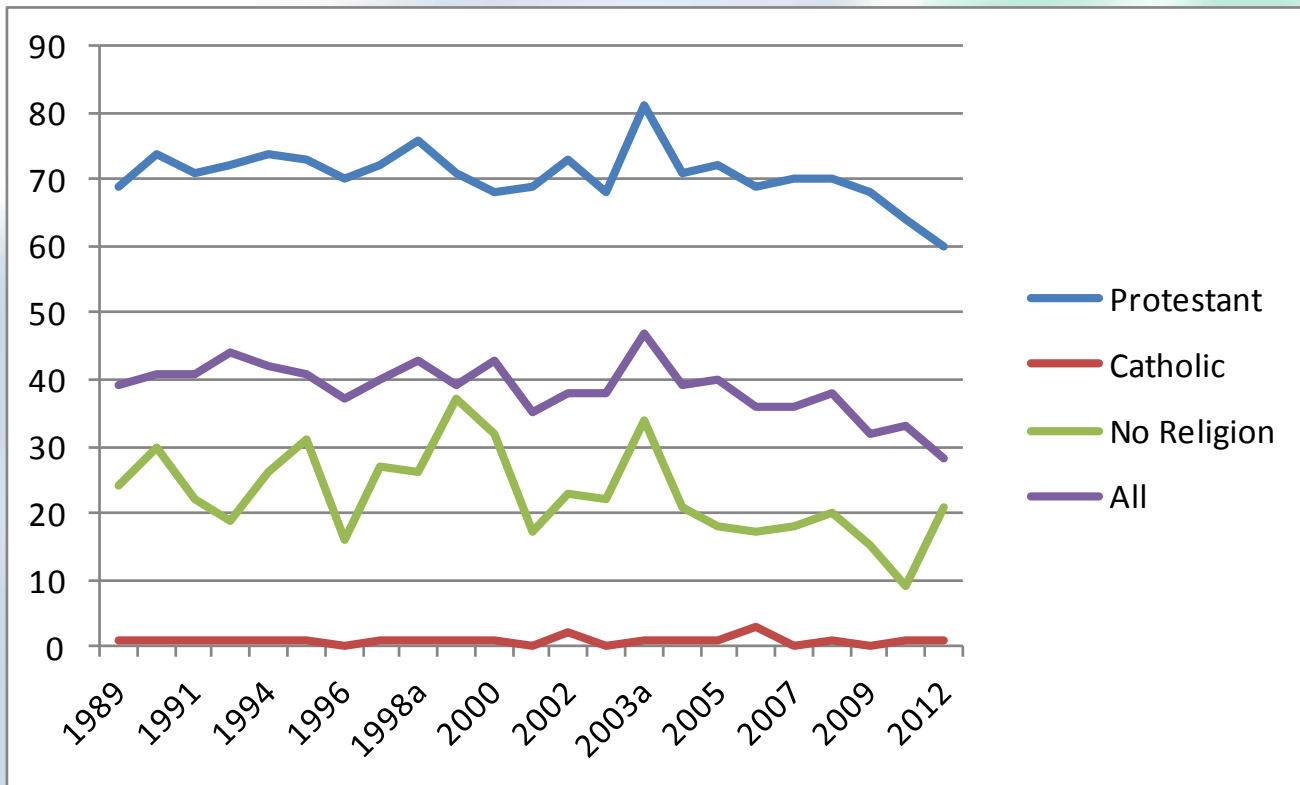


Fig 7 % think of themselves as nationalist by religion

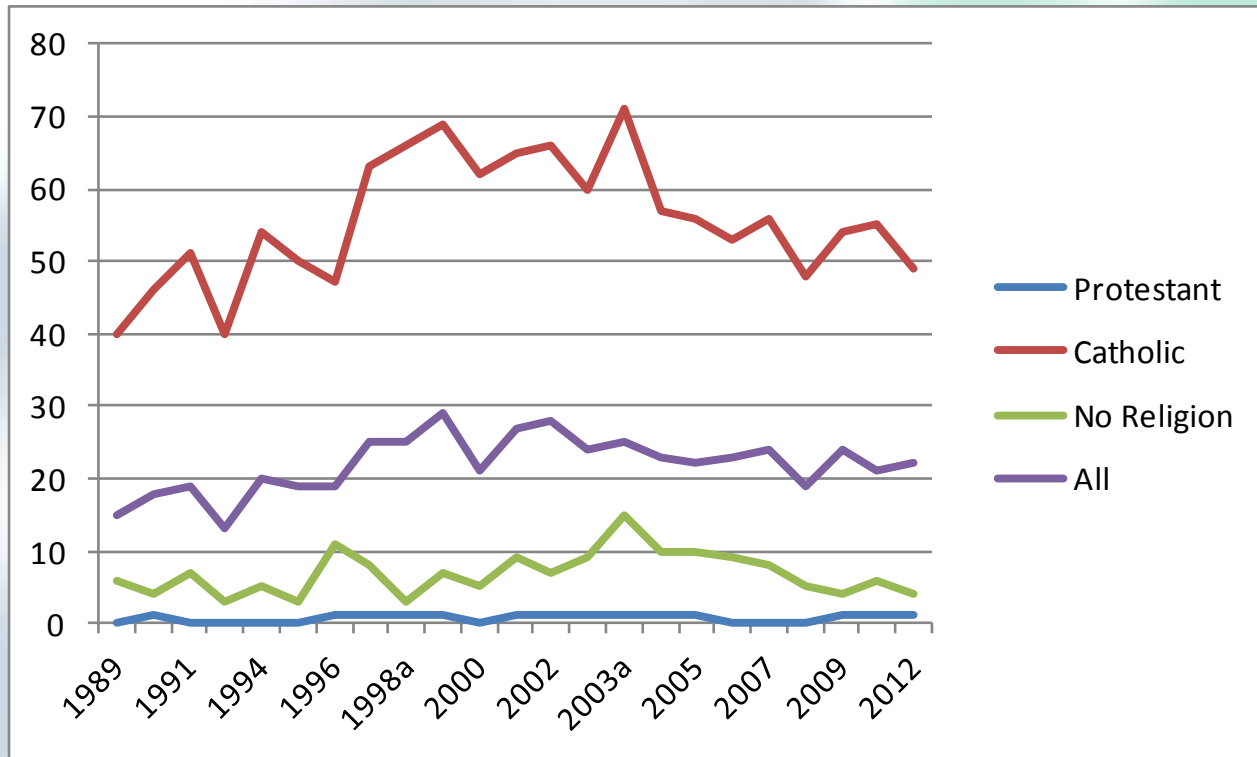


Fig 8 % think of themselves as neither unionist nor nationalist by religion

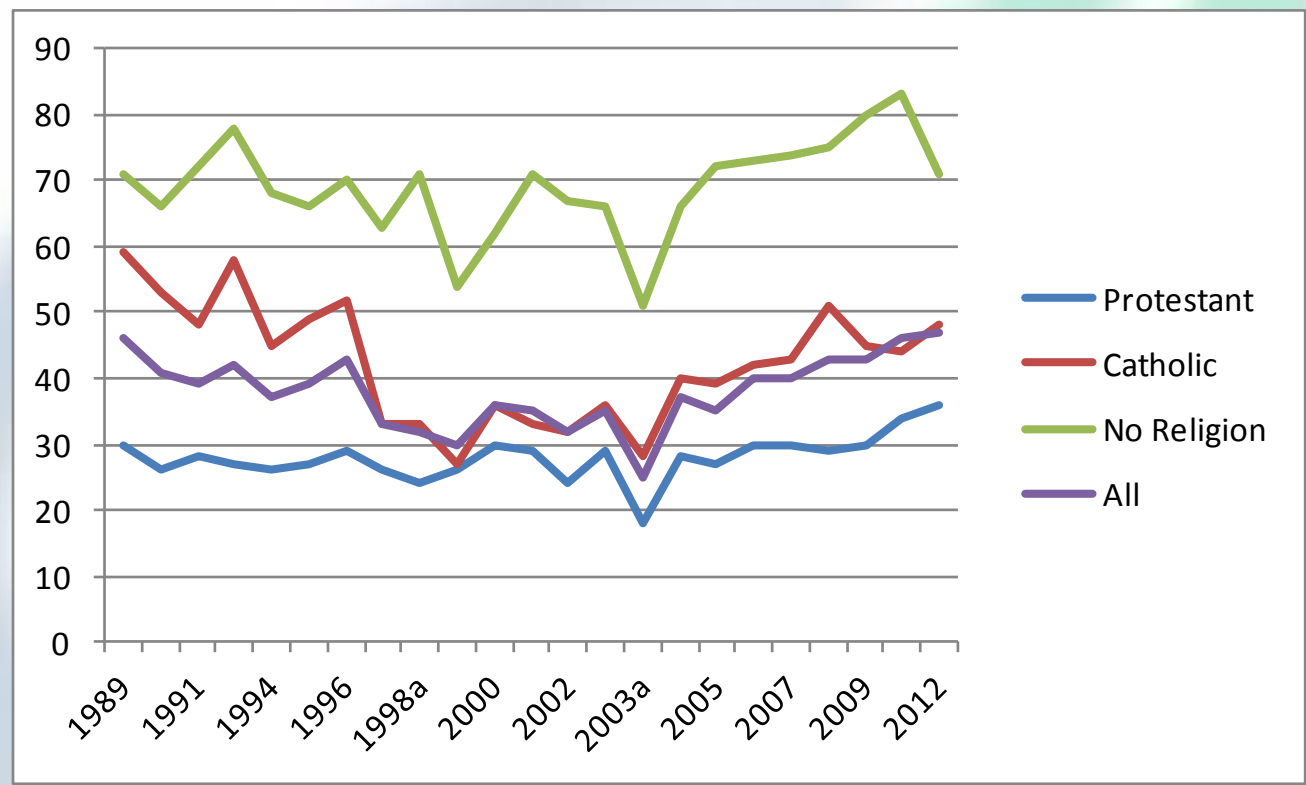


Fig 9:
% Protestant who think of themselves as Unionist
% Catholic who think of themselves as Nationalist

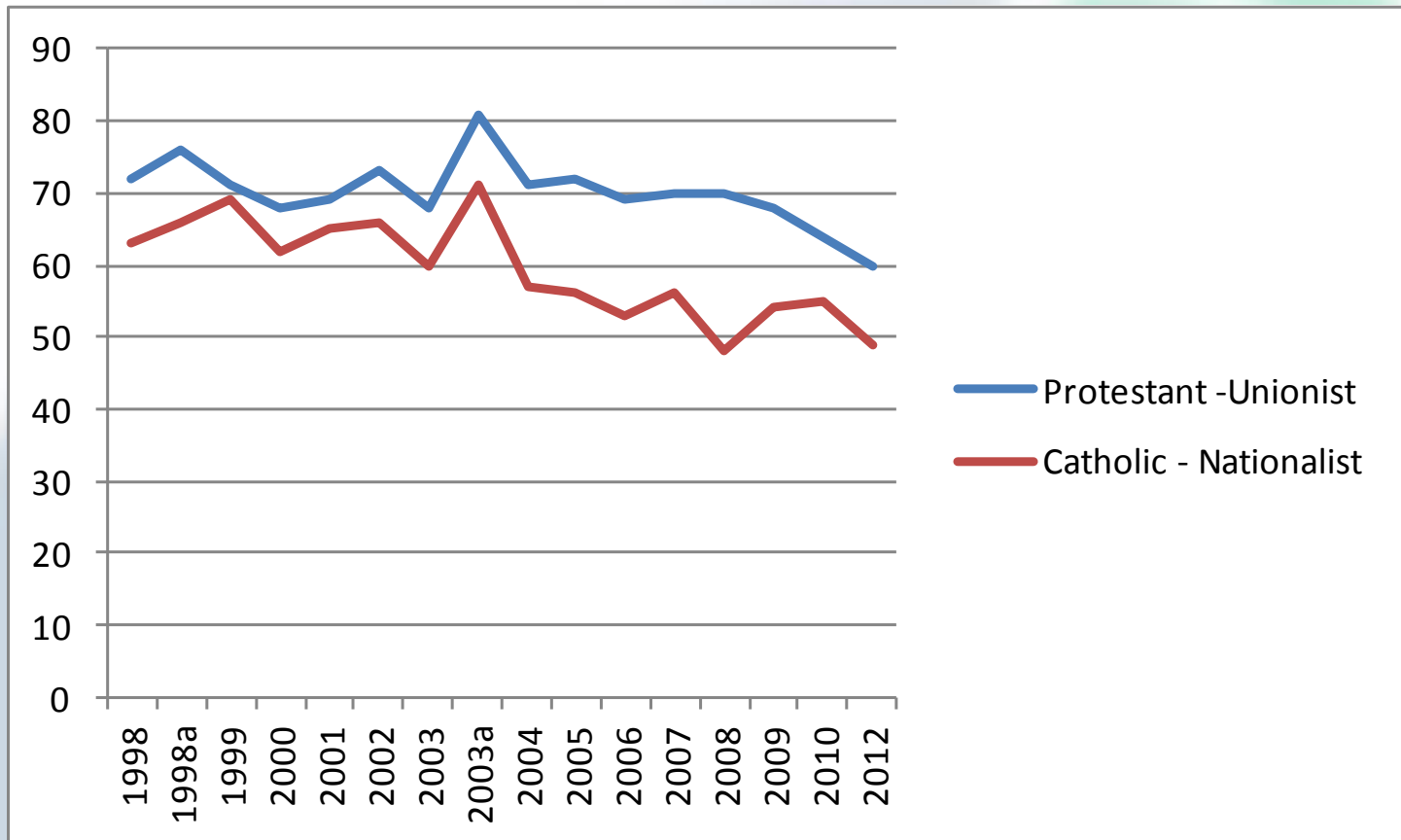
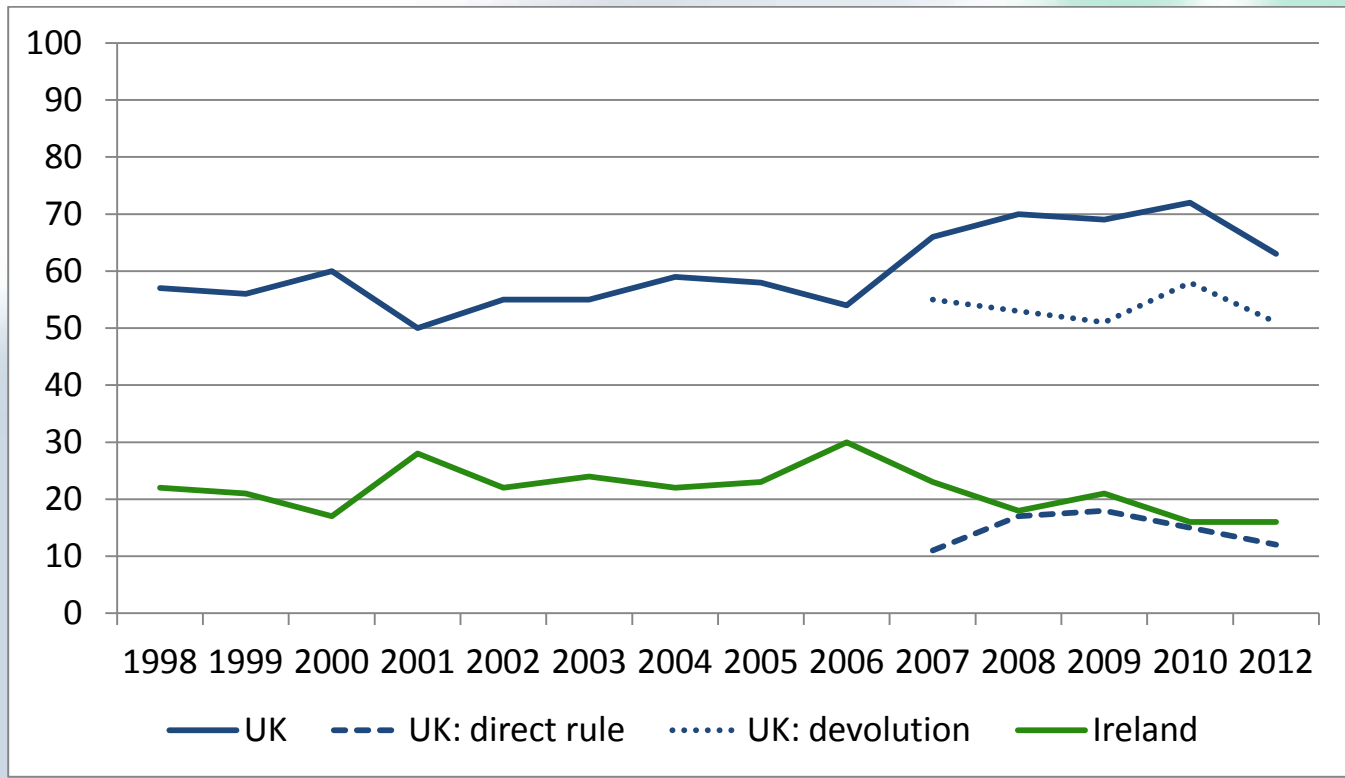


Fig 10: Preferred long-term policy for Northern Ireland 1998-2012



Sources: 1998-2012 Northern Ireland Life and Times survey
 Note: Question change in 2007 to include UK: direct rule and UK: devolution

- 1998-2006

Do you think the long-term policy for Northern Ireland should be for it...

Remain part of the United Kingdom
Reunify with the rest of Ireland?
Independent state
Other answer
Don't know

- 2007-2012

Do you think the long-term policy for Northern Ireland should be for it...

Remain part of the United Kingdom with direct rule
Remain part of the United Kingdom with devolved government
Reunify with the rest of Ireland?
Independent state
Other answer
Don't know

Fig 11: Preferred long-term policy for Northern Ireland 1998-2012
Reunify with Ireland by Religion

www.ark.ac.uk

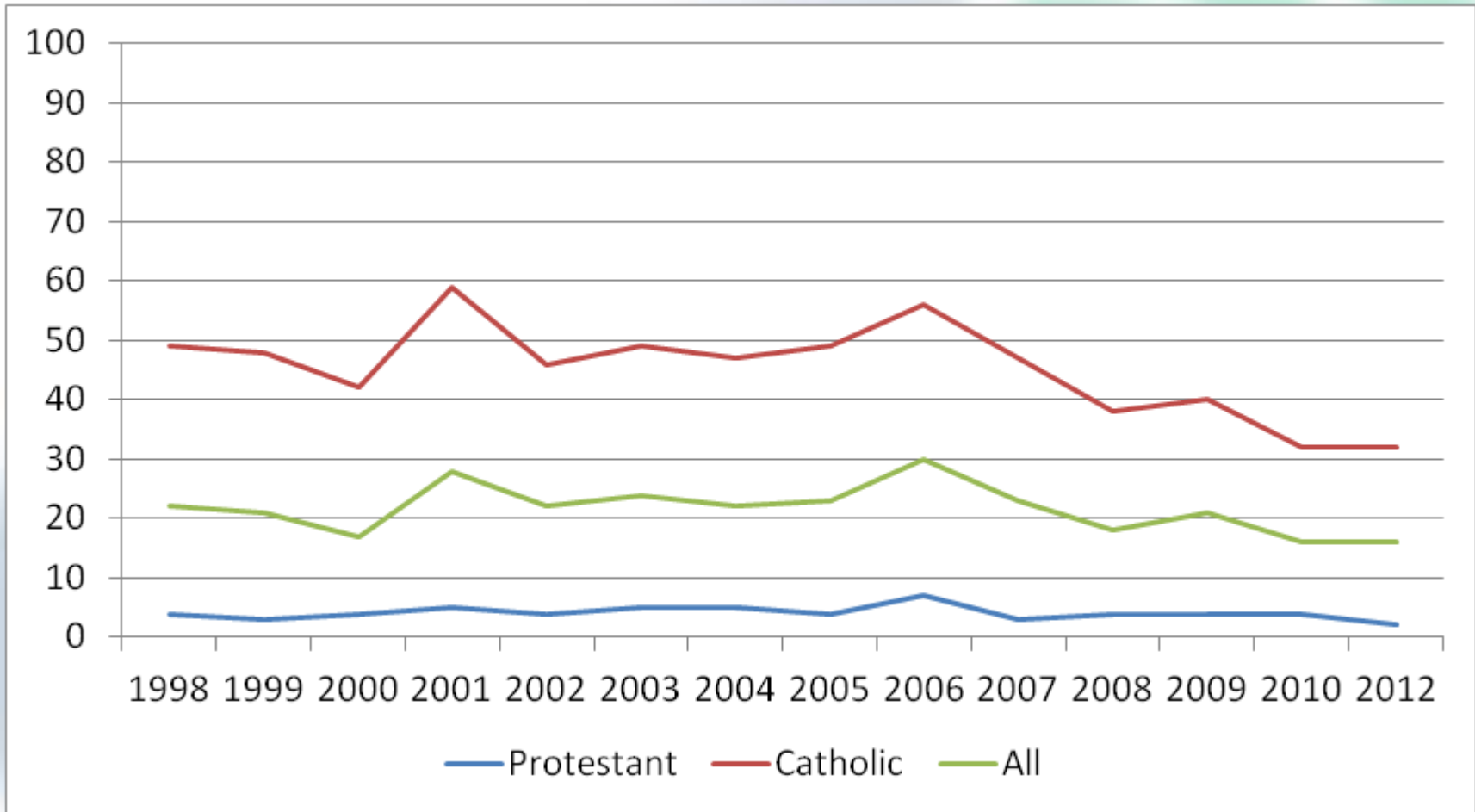
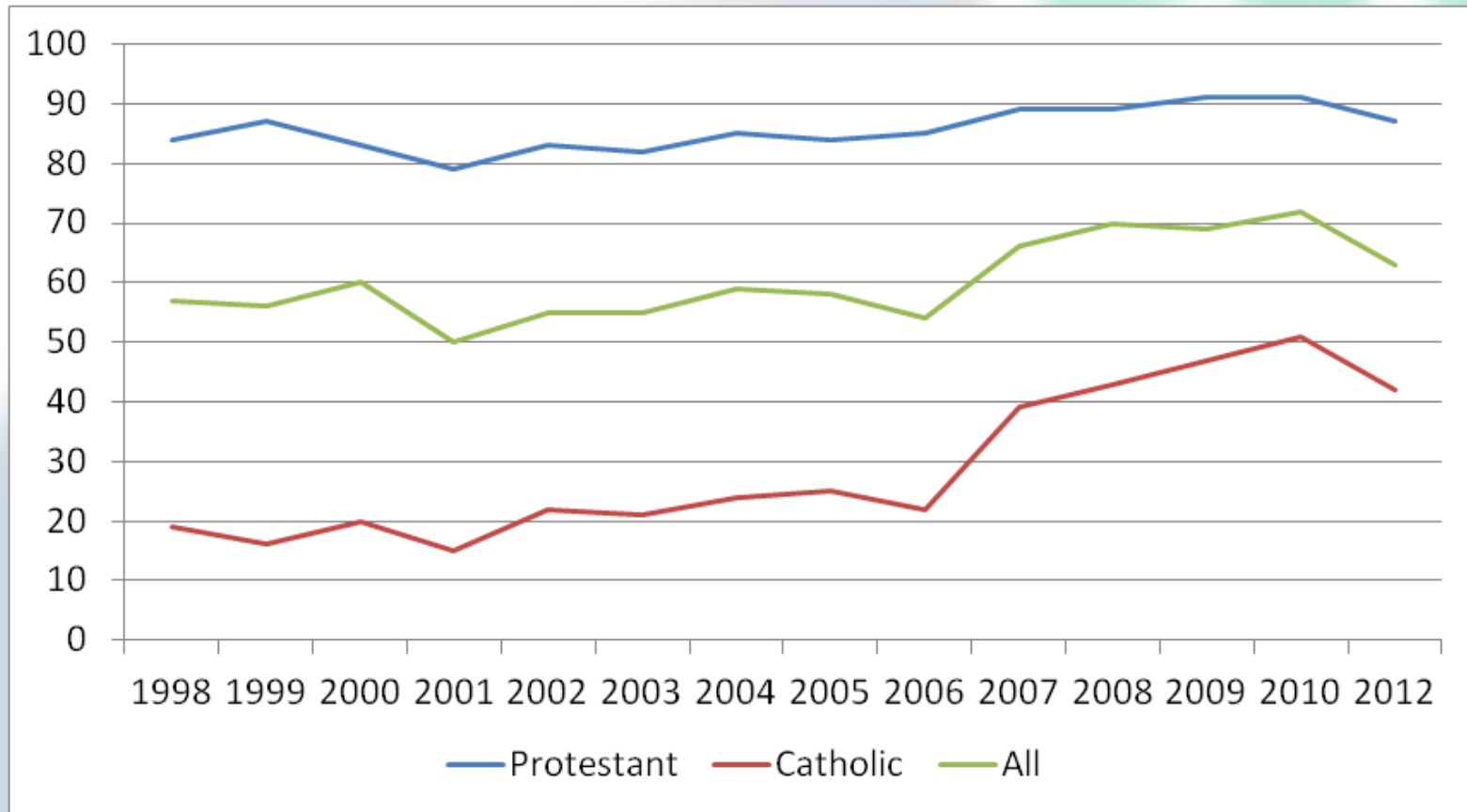


Table 1: At any time in the next 20 years, do you think it is likely or unlikely that there will be a United Ireland

Year	Very/Quite likely %			
	All	Catholic	Protestant	No Religion
2003	29	26	32	22
2012	15	14	19	11

Note: Don't knows have risen from 10% to 15% overall

Fig 12: Preferred long-term policy
for Northern Ireland 1998-2012
Remain in UK by Religion



- Identity
 - Overall Increase in Irish
 - Overall Decrease in Northern Irish
 - Prot. Increase in British
 - Cath. Increase in Irish
- Political preference
 - 47% neither Nationalist nor Unionist
- Constitutional preference
 - Expectations of a United Ireland have receded
 - Drop in those wishing to remain in UK

Professor Rick Wilford
Queen's University Belfast

Questions and Comments welcome

#nilt2012

#politicalattitudes

www.ark.ac.uk



ARK

Northern Ireland

ACCESS RESEARCH KNOWLEDGE

